

ZyXEL

TOTAL INTERNET ACCESS SOLUTION

Omni 128L

IDSL Modem

Quick Start Guide

Table of Contents

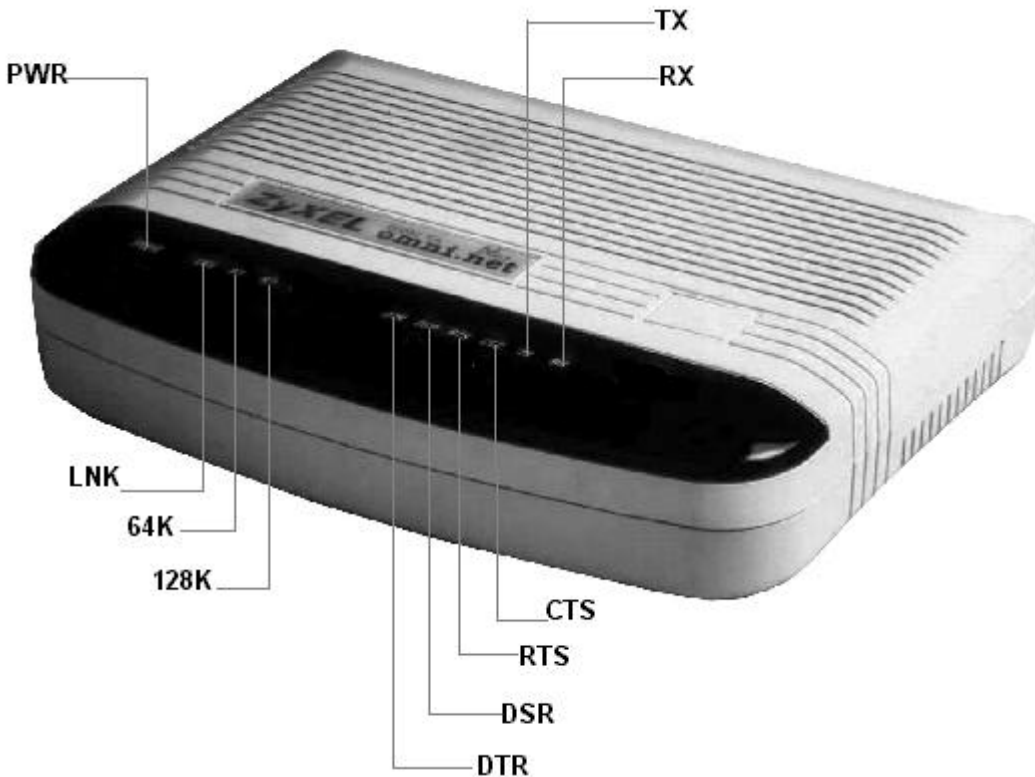
1. Installation	1-1
Front Panel Description	1-1
Back Panel Description and Connections	1-3
Power On and Self Diagnostics	1-4
2. Install Windows 95/98/NT Driver (INF file)	2-1
Customer Support	

1. Installation

Thank you for choosing the ZyXEL Omni 128L IDSL modem. This section is designed to guide you through a quick, easy installation of your new Omni 128L.

The following graphics display the Omni 128L front and rear panels. All installation steps below apply to the Omni 128L.

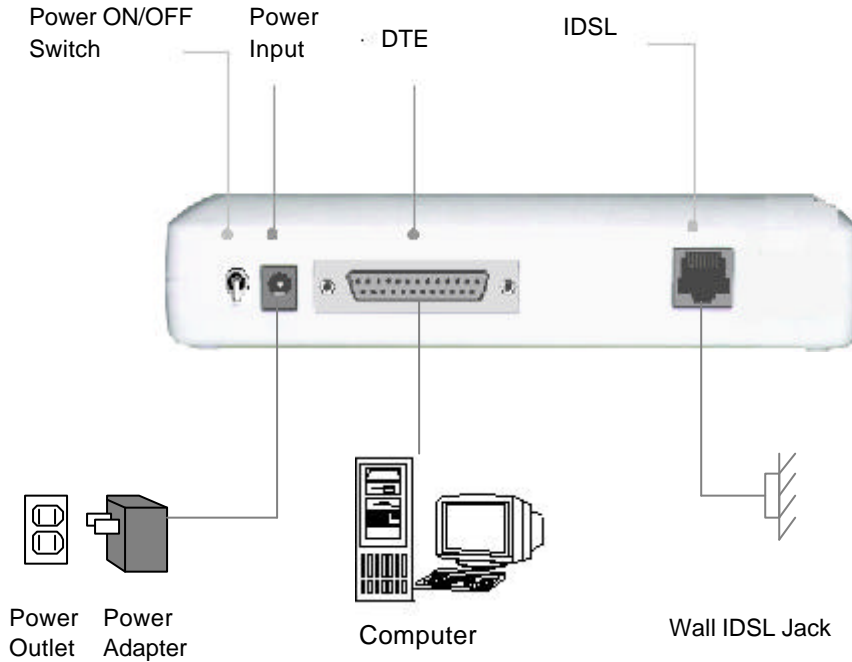
Front Panel Description



Front Panel LEDs

LED	Function	Active	Description
PWR	Power LED	On	When the power is turned ON.
LNK	Link LED	On Blinking	When the link with the local ISDN switch is active. When attempting to make a connection.
64K	B1 Channel	On	When the 64K link is established.
128K	B2 Channel	On	When the 128K link is established.
DTR	Data Terminal Ready	On	When the DTE or computer connected to the DTE port signals that it is ready for communication by establishing an RS-232 link.
DSR	Data Set Ready	On	When the modem is ready for communication with the DTE.
RTS	Request To Send	On	When the DTE has data to be sent to the remote modem. The RTS signal is used in Hardware Handshaking.
CTS	Clear To Send	On	When the modem is ready to receive data from the remote modem. The CTS signal is used in Hardware Handshaking.
TX	Transmit Data	Blinking	When the DTE/Computer transmits data to the DTE port.
RX	Receive Data	On	When the DTE/Computer receives data from the DTE port.

Back Panel Description and Connections



Back Panel Switch and Connectors

ON/OFF	Turn the Omni 128L on or off using this switch.
POWER	Input terminal for power adapter.
DTE	Serial port DB-25 female connector for connection to the serial port of a DTE device such as a computer.
IDSL	IDSL RJ-45 terminal jack; connects to an IDSL interface.

Power On and Self Diagnostics

Once you have completed all of the installation steps above, flip the On/Off switch to the ON (up) position. The unit starts a self-test sequence, when you should see a series of LEDs blinking (LED, 64K, 128K). After this cycle is complete, the PWR light should stay on.

If the test routine fails, the LNK LED flashes.

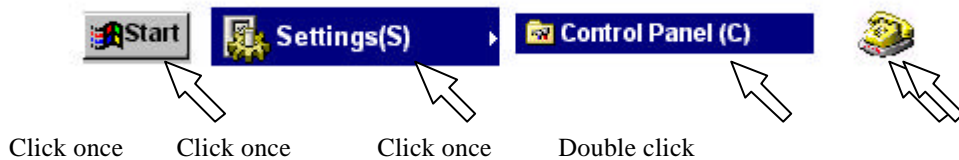
If you have a communication program loaded and active (connected to the same serial port as the Omni 128L), you should see the **DTR** LED ON after the self-test.

2. Install Windows 95/98/NT Driver (INF file)

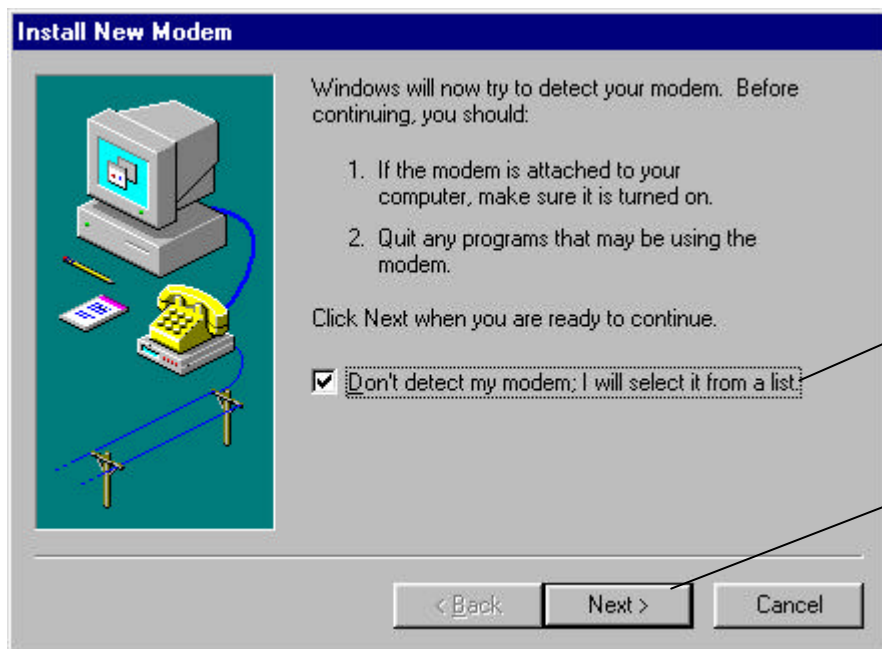
As a windows 95/98/NT user, to successfully use the ZyXEL Omni 128L IDSL modem, you have to install INF files to setup your modem first.

If your computer supports Plug & Play, be sure your modem is powered on before starting your computer. If you are using a non-Plug & Play protocol, follow the steps below to perform the installation:

Step 1. Double-click on the Modems icon in the Windows 95/98/NT Control Panel folder. Then click the Add button.



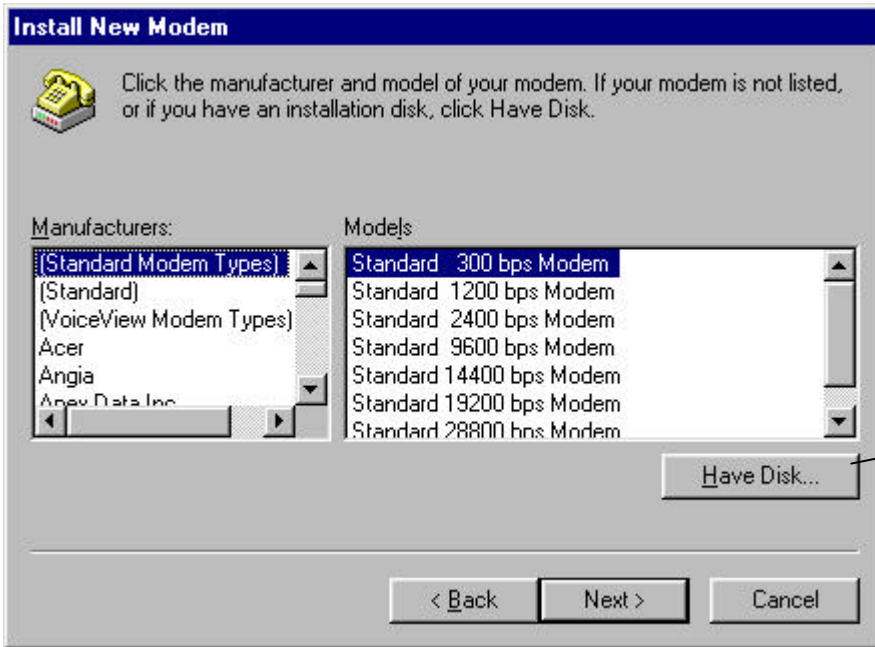
Step 2. Select "Don't detect my modem; I will select it from a list." Then, click **Next** to continue.



1. Select this checkbox.

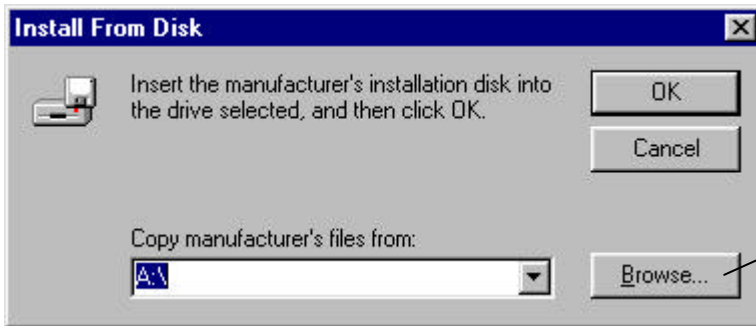
2. Click **Next** to continue.

Step 3. Click **Have Disk**, then follow the instructions in the following illustrations:

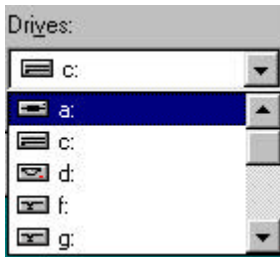


1. Click here to continue.

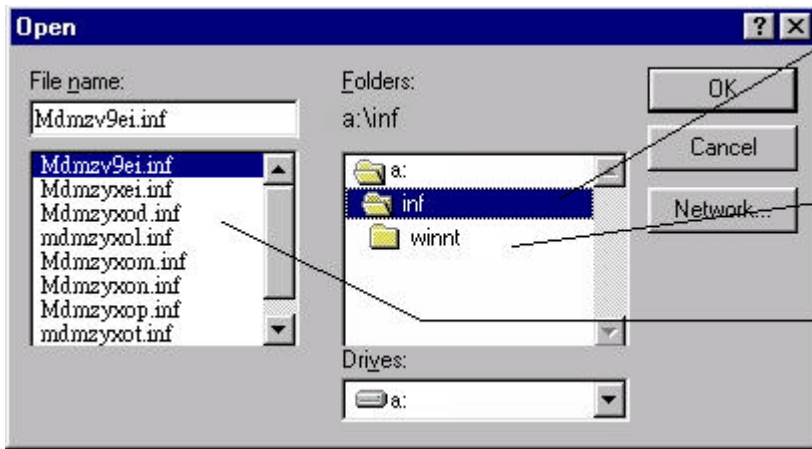
2. Make sure the installation disk is in your floppy.



3. Use **Browse** to find the location of the updated INF file.



4. Select your floppy drive (here it is A:), then you will see the next display.

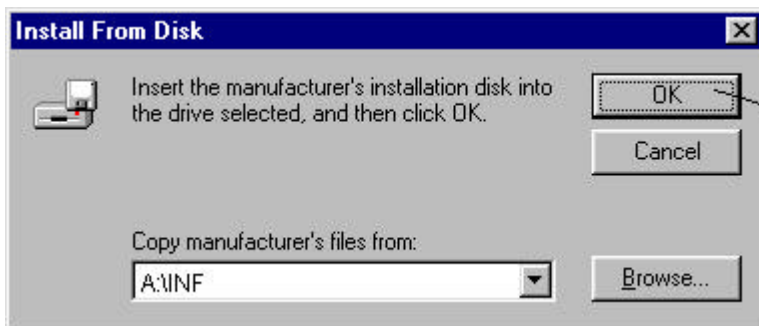


5. Select the inf folder, and a list of INF files will appear in the left column.

(For Windows NT users, please select the winnt folder)

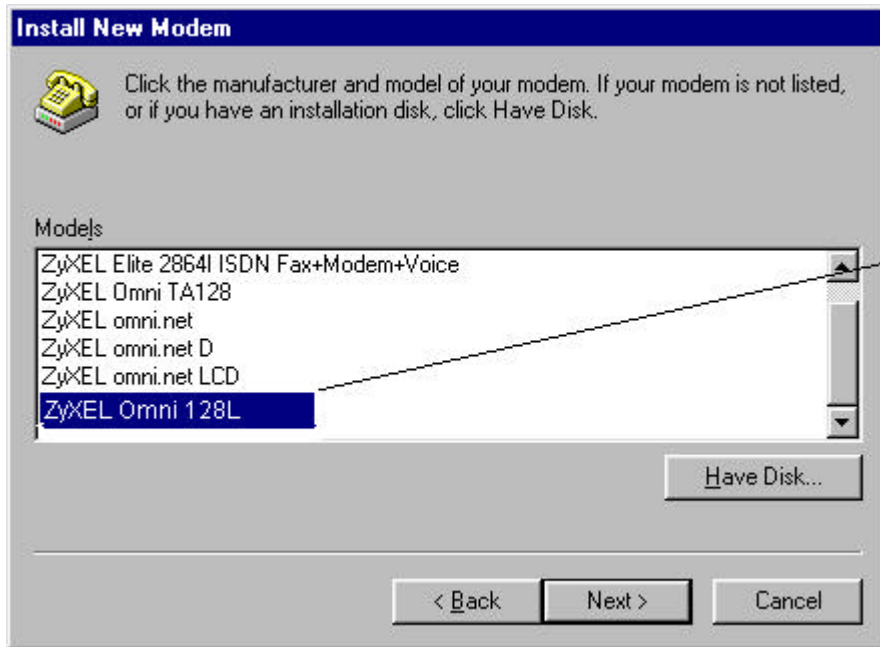
6. Don't make any selection here. Click OK to go to the next screen.

Step 4. Click **OK** to install INF files from your installation disk .



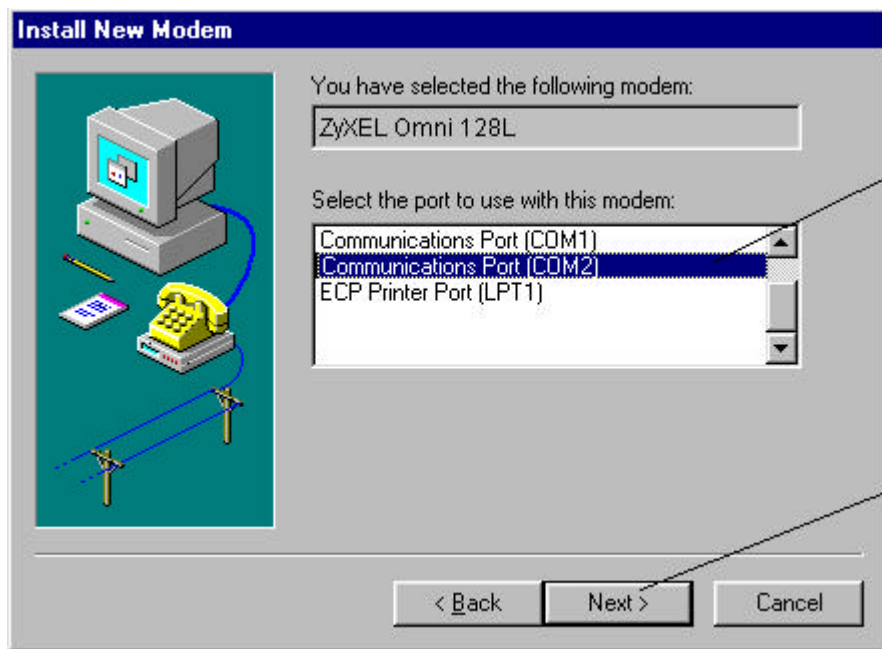
Click here to continue

Step 5. Use the scroll bar to locate the model name of your ZyXEL device, then click once on the new device "ZyXEL Omni 128L."



Click here for
your new Omni
128L.

Step 6. Select the COM port to which your Omni 128L is connected.



1. Click the correct COM port for your PC. (COM 1, 2, 3 or 4)

2. Click **Next** to continue.

Step 7. Wait for the installation to complete.



Please wait...

Step 8. Click **Finish** to complete INF files installation.

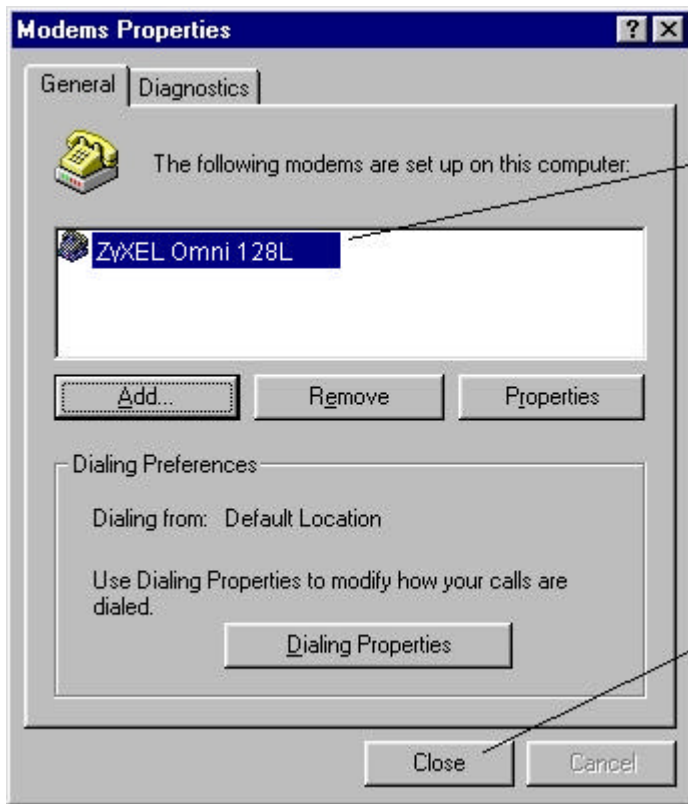


Click here to Finish.



Note: You also can download an updated INF file from ZyXEL's FTP, Web Site, or BBS.

Step 9. Click **Close** to end the INF files installation.



The ZyXEL Omni 128L has been successfully installed on your PC.

Click **Close** to end the INF files installation.

Customer Support

ZyXEL IDSL Modem

If you have any questions about your ZyXEL product or desire customer assistance, contact ZyXEL in one of the following ways.

Contact ZyXEL

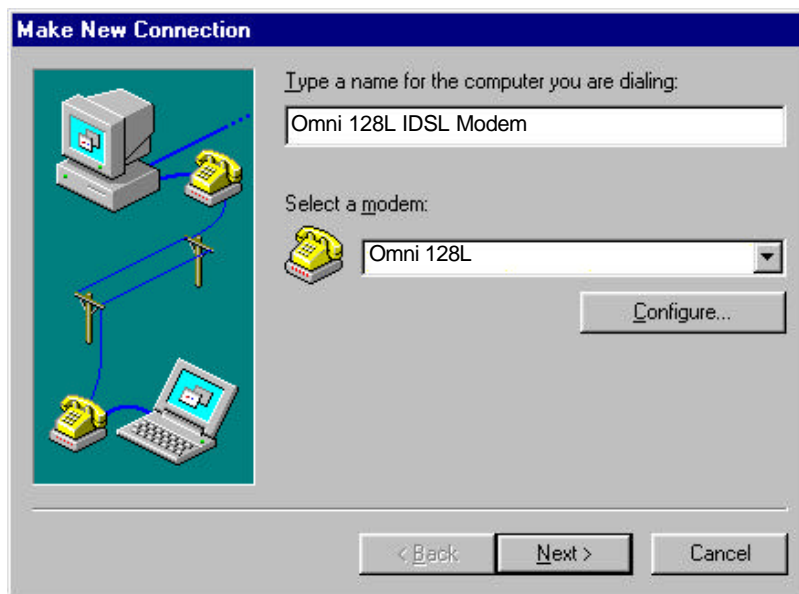
Method Location	E-MAIL – Support	Telephone	Web Site	Regular Mail
	– Sales	Fax	FTP Site	
Worldwide	support@zyxel.com.tw support@europe.zyxel.com sales@zyxel.com.tw	+886-3-578-3942 +886-3-578-2439	www.zyxel.com www.europe.zyxel.com ftp.europe.zyxel.com	ZyXEL Communications Corp., 6 Innovation Road II, Science-Based Industrial Park, HsinChu, Taiwan.
North America	support@zyxel.com sales@zyxel.com	+1-714-632-0882 800-255-4101 +1-714-632-0858	www.zyxel.com ftp.zyxel.com	ZyXEL Communications Inc., 1650 Miraloma Avenue, Placentia, CA 92870, U.S.A.
Scandinavia	support@zyxel.dk sales@zyxel.dk	+45-3955-0700 +45-3955-0707	www.zyxel.dk ftp.zyxel.dk	ZyXEL Communications A/S, Columbusvej 5, 2860 Soeborg, Denmark.
Austria	support@zyxel.at sales@zyxel.at	+43-1-4948677-0 +43-1-4948678	www.zyxel.at	ZyXEL Communications Services GmbH, Thaliastrasse 125a/2/2/4 A-1160 Vienna, Austria
Germany	support@zyxel.de sales@zyxel.de	49-2405-6909-0 49-2405-6909-99	www.zyxel.de	ZyXEL Deutschland GmbH, Adenauerstr. 20/A4 D-52146 Wuerselen Germany.

Create a Dial-up Connection

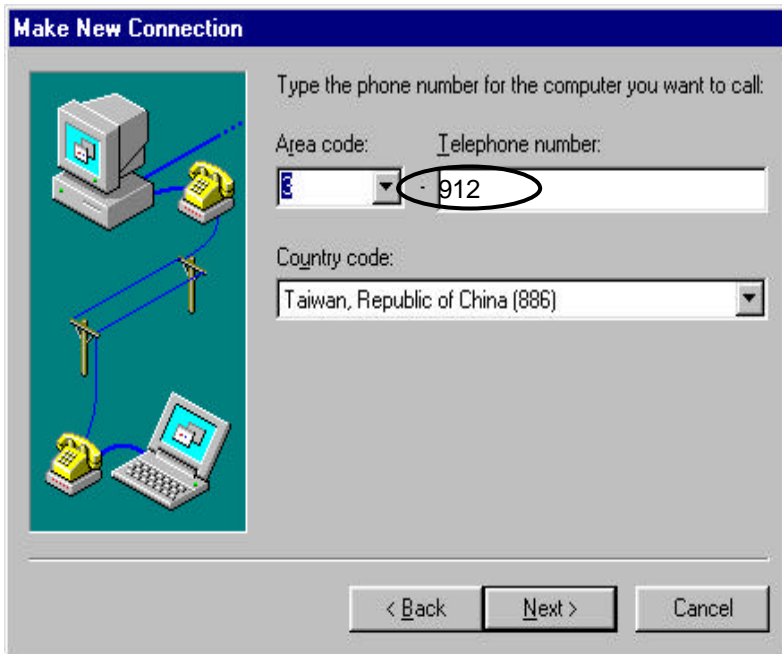
Now you only have one step away to access Internet. Follow the instructions below to create a new Dial-up Connection.

Step 1. Click on **My Computer** of your desktop, select **Dial-up Network**, then click on **Add New Dial-up Connection**.

Step 2. Give a name to this Dial-up Connection; for example, Omni 128L IDSL modem. Then select your Omni 128L as the device to connect to Internet, then click **Next**.



Step 3. Enter the default phone number “912”, then click **Next**.



Step 4. Click **Finish**.

From now on, you can access Internet by your new IDSL modem.