

Prestige 312

ZyNOS Firewall Support

The Prestige 312 provides the capability of stateful inspection filtering as well as real firewall network protections. ZyNOS's firewall feature supports Stateful inspection, DoS (Denial of Services) detection and prevention, real time alert, reports and logs.

ZyNOS Multi-NAT technology

The Prestige 312 supports Multi -to- Multi, Multi -to-One, and One-to-One address mapping. It can handle at least 64 connections from unlimited local IP address share the same legal IP address that can be either statically or dynamically assigned. It also supports most of the popular Internet multimedia applications, such as NetMeeting, CuSeeMe, IP TV, Quick Time, Real Player (RSP/RTSP) etc.

Easy Network Management

The Prestige 312 offers complete solution of DHCP server and client. It behaves as a DHCP client by obtaining an IP address from ISP's server when a connection is built, and also serves as a DHCP server on LAN site to provide IP address to LAN computers. System administrators can easily attach this security gateway into existing network and manage the IP assignment without re-configure other stations.

Multiple Services Support

With PPPoE, PPTP, and RoadRunner Manager support, the Prestige 312 can provide the service providers a broad range of existing applications and services including authentication, accounting, secure access and configuration management.

Broadband Internet Access via Cable or xDSL

Prestige 312 has the capability via 10M Ethernet port of connecting a cable modem/xDSL modem to access the Internet. It provides not only the high speed Internet surfing, but secured internal network protection and management as well.



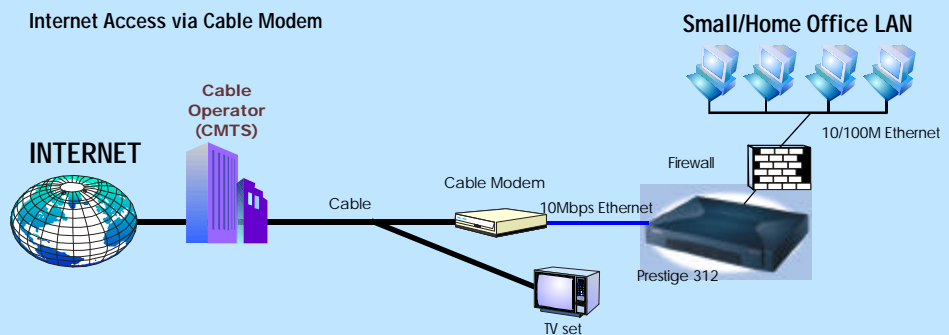
ISO 9001 Certified.



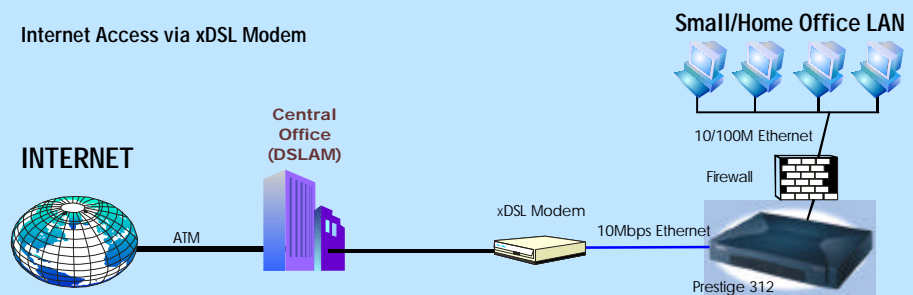
This product is based on the ZyNOS Networking Operating System with free firmware upgrades that can be downloaded as they become available.

Specifications are subject to change without notice.

Internet Access via Cable Modem



Internet Access via xDSL Modem



Physical Interface

- One RJ-45 port for 10M Ethernet WAN connection
- One RJ-45 port for 10M/100M Ethernet LAN connection
- One DB-9 RS-232 port for local configuration and management



TOTAL INTERNET ACCESS SOLUTION

International:
ZyXEL Communications Corp.
Tel: 886-3-5783942
Fax: 886-3-5782439
E-mail: sales@zyxel.com.tw
support@zyxel.com.tw
Web: http://www.zyxel.com

North America:
ZyXEL Communications, Inc.
Tel: 714-632-0882
Fax: 714-632-0858
E-mail: sales@zyxel.com
support@zyxel.com
Web: http://www.zyxel.com

Scandinavia:
ZyXEL Communications A/S
Tel: 45-3955-0700
Fax: 45-3955-0707
E-mail: sales@zyxel.dk
support@zyxel.dk
Web: http://www.zyxel.dk

Germany:
ZyXEL Deutschland GmbH.
Tel: +49-2405-6909-0
Fax: +49-2405-6909-99
E-mail: sales@zyxel.de
support@zyxel.de
Web: http://www.zyxel.de

Austria:
ZyXEL Communications Services GmbH.
Tel: +43-1-4948677-0
Fax: +43-1-4948678
E-mail: sales@zyxel.at
support@zyxel.at
Web: http://www.zyxel.at

Prestige 312

Broadband Access Security Gateway



Z yXEL's Prestige 312 is a dual Ethernet broadband security gateway designed for SOHO/Small Business to have a secure access to the Internet via Cable/xDSL modem.

Firewall Support

- ICSA certified Firewall supports
- Stateful Inspection: FTP, SMTP, HTTP, Telnet, SSL, DNS
- Denial of Service(DoS): Ping of Death, SYN flood, LAND, Smurf, SMTP attack
- Real time alert via e-mail
- "Report" and "logs" show the status of the traffic.

Internet Access Sharing

- IP routing support
- NAT/SUA enables multiple workstations on the LAN to access the Internet simultaneously for the cost of only one IP address.
- NAT supports Port Address Translation(PAT) and Multimedia applications support (NetMeeting, CuSeeMe, ICQ, etc)
- PPPoE & PPTP for xDSL modem connection support*
- RoadRunner Manager for Cable modem connection support*

Network Management

- Windows-based configurator for quick configuration
- Menu driven user interface for easy network management
- Local and remote console management
- Integrated SNMP support for managing complex networks from remote sites
- Syslog for recording the connection logs
- Command Line Interpreter (CLI) support
- TFTP/FTP firmware upgrade and configuration backup and restore
- Built-in diagnostic and remote support tools
- DHCP client/DHCP server support

Network Protocols

- PPP support
- IP Routing Protocol : TCP, UDP, ICMP, ARP and Proxy ARP
- IP Multicasting
- Transparent Bridging
- RIP-1, RIP-2

Physical Interfaces

- Dimension: 267 (W) x 178 (L) x 37(H) mm
- Operating Environment :
 - Temperature : 0^o- 40^o C;
 - Humidity: 5-90 %
- Storage Environment:
 - Temperature: -30^o-60^oC;
 - Humidity: 20-95 %
- Power: 12VDC
- Weight: 717 g

Two Years Warranty

ZyXEL

TOTAL INTERNET ACCESS SOLUTION