

P-660R-D Series

ADSL2+ Router

Quick Start Guide

Version 3.40
6/2006
Edition 1



Copyright © 2006 ZyXEL Communications Corporation. All rights reserved.

Overview

The P-660R-D is an ADSL router.

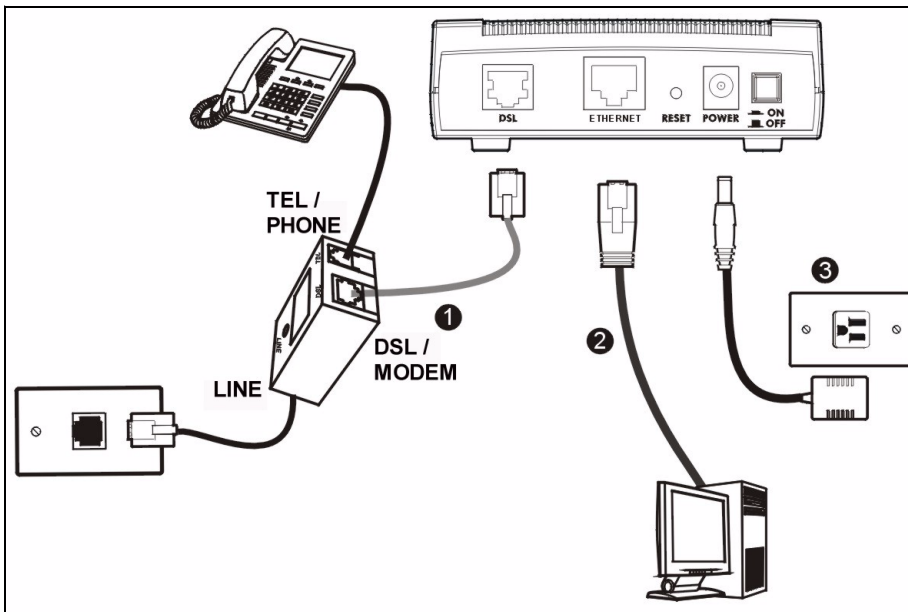
See your User's Guide for background information on all features.

How to use the included CD

This CD provides multi-media animations that help you set up your P-660R-D.

- 1 On the included CD, click **Multimedia Auto Provisioner > Installation Tutorial**.
- 2 At the end of the tutorial, click **Configuration Genie**.

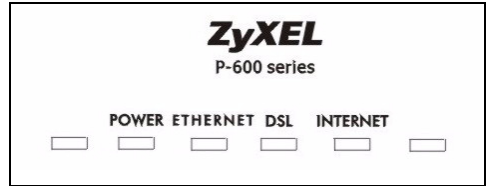
1 Hardware Connections



- 1 **DSL:** Use the gray ADSL cable to connect the telephone jack (or the **DSL** or **MODEM** jack on a splitter) to this port.
- 2 **ETHERNET:** Use an Ethernet cable to connect a computer to this port for initial configuration and/or Internet access.
- 3 **POWER:** Use the included power adaptor to connect the **POWER** socket to an appropriate power source.

After you've made the connections, push in the power button to turn on the P-660R-D. Look at the top panel lights.

- The **POWER** light blinks during start-up and stays green once the P-660R-D is ready.
- The **DSL** light stays on if a physical connection with the Internet Service Provider (ISP) is established. The **INTERNET** light stays on when Internet access is available and blinks when Internet traffic is going through your P-660R-D.
- The **ETHERNET** light turns on if the Ethernet port is properly connected and blinks when there is traffic.

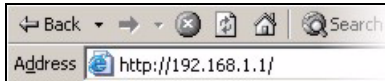


If the **DSL** light is on, go to section 2 to check the status page or section 3 to setup your Internet access.

If the **DSL** light is off, check your hardware connections. See [Troubleshooting](#) for more information.

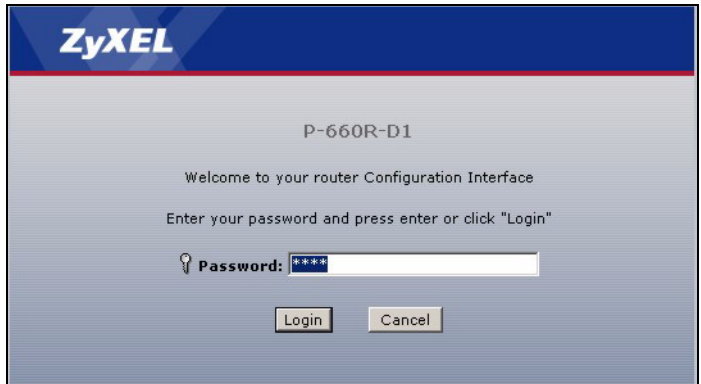
2 Status Page

- 1 In your browser, go to <http://192.168.1.1>.

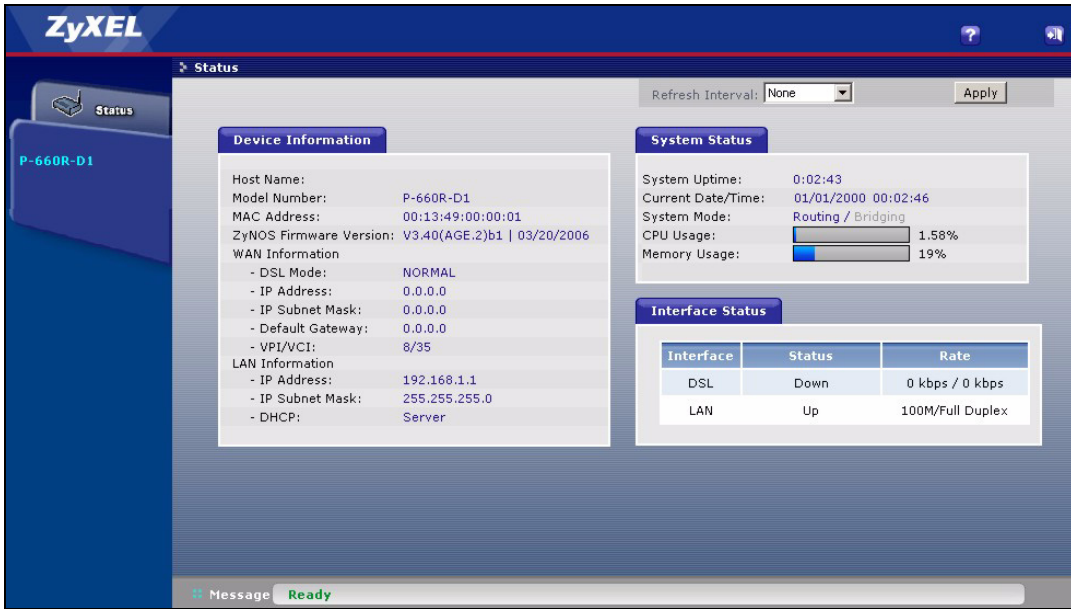


- 2 Enter the default password **user** to go directly to the **Status** screen.

If your browser cannot find this screen, make sure your computer is configured to obtain an IP address automatically. Also, check the security settings of your browser. See [Troubleshooting](#) for details.



3 See the User's Guide for field descriptions of the **Status** screen.



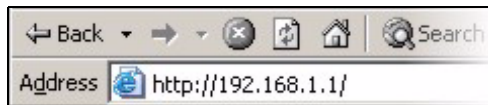
3 Internet Setup

1 Open your web browser, and go to <http://www.zyxel.com>.

Your P-660R-D tries to detect your Internet connection. Wait for the P-660R-D to finish detection. If any other screens appear, follow the directions in the screen.

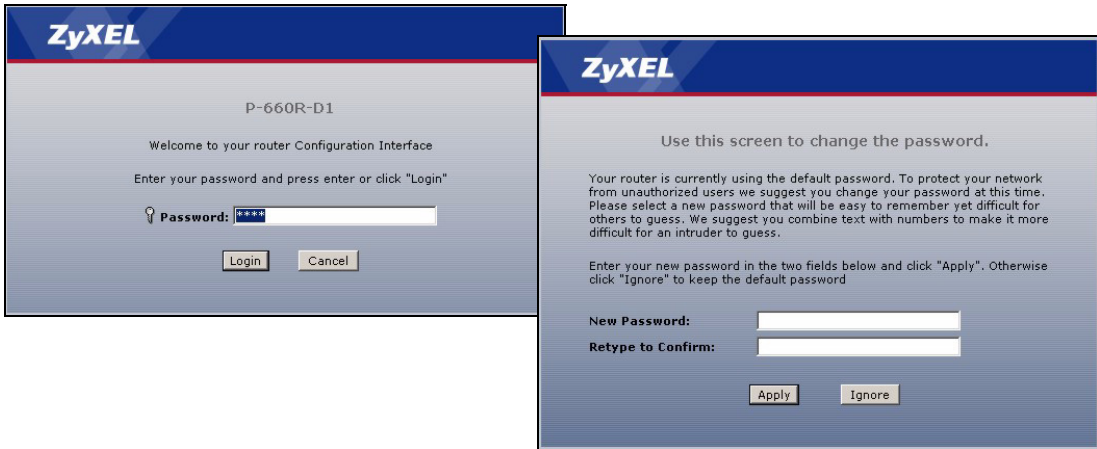
If the web page opens correctly, your P-660R-D is ready for you to use. If the web page does not open, follow the rest of the steps. You should have the information provided by your ISP.

2 In your browser, go to <http://192.168.1.1>.



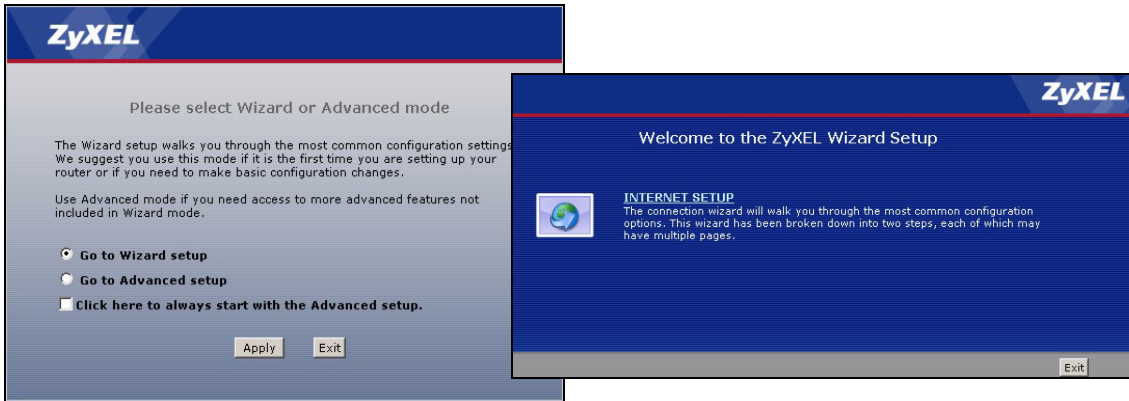
3 Enter the admin password **1234** to set up your Internet connection. Click **Login**. If your browser cannot find the login screen, check its security settings. See **Troubleshooting** for details.

4 Follow the directions in the screens.



5 Click **Go to Wizard setup**. Then, click **Apply**.

6 Click **INTERNET SETUP**. Wait while your P-660R-D tries to detect your DSL connection.



7 Follow the directions in the wizard. Do not change default settings if your ISP did not provide information.

Troubleshooting

- 1 If you cannot access the web configurator using Internet Explorer in Windows XP or Windows Server 2003, make sure you allow pop-up windows, JavaScripts and Java permissions or set the Internet security level lower than **High** in Internet Explorer (in Internet Explorer, click **Tools > Internet Options > Security > Custom Level...**). See the appendix in the User's Guide for more information.
- 2 If you cannot access the Internet when your computer is connected to the **ETHERNET** port, follow these steps.

- A) Check the lights on the front panel. If they are different than what is described in section 1, make sure the connections are correct. (See section 1.) If the lights are still different, turn off the device, wait a few seconds, and turn it on again.
- B) Follow the steps in section 3 again. Make sure you enter the correct information. For example, if your account has a user name and password, make sure you type it correctly. In addition, if you are not sure which encapsulation your ISP uses, contact your ISP.
- C) If you are using a new Internet account, contact your ISP to make sure it is active.
- D) If you still have problems, see **Troubleshooting** in the User's Guide.

Viewing Your Product's Certifications

- 1 Go to www.zyxel.com.
- 2 Select your product from the drop-down list box on the ZyXEL home page to go to that product's page.
- 3 Select the certification you wish to view from this page.