

P-793H

G.SHDSL.bis 4-port Security Gateway

Quick Start Guide

Version 3.40
Edition 2
1/2007



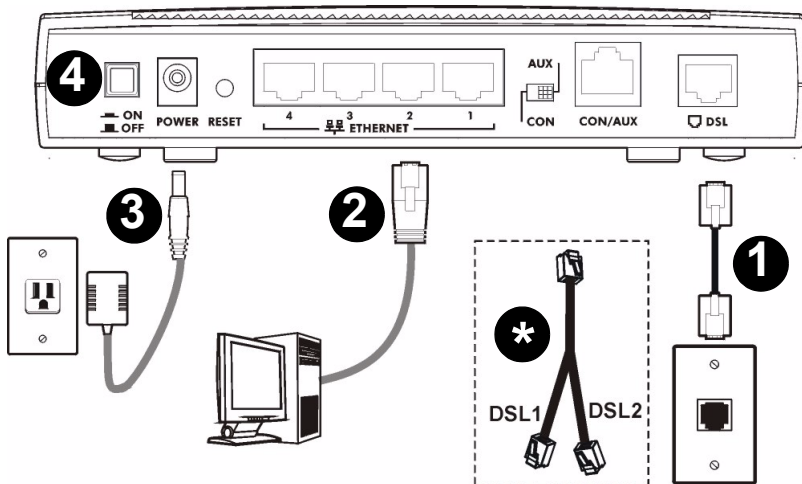
Copyright © 2007 ZyXEL Communications Corporation. All rights reserved.

Overview

This Quick Start Guide shows how to set up the P-793H for Internet access.

See the User's Guide for information about setting up point-to-point or point-to-2points connections.

1 Hardware Connections



- 1 Use a telephone wire to connect the P-793H's **DSL** port to the telephone jack or wall outlet for Internet access (or for a point-to-point connection).
 - * Use a Y-cable for point-to-2points connections. See the User's Guide for more details and cable specifications.
- 2 Use an Ethernet cable to connect a computer to an **ETHERNET** port for Internet access or to configure the P-793H.
- 3 Use the power adaptor provided with your P-793H to connect an appropriate power source to the **POWER** socket. Make sure the power source is on.
- 4 Push in the **POWER** button.

The **CON/AUX** port and corresponding **CON**, **AUX** switch are used when you want to set up dial backup or use the console port. Make sure that the switch is set to **AUX** for dial backup setup. See the User's Guide for more details about these features.

Look at the LEDs

- The **POWER** LED blinks green while your P-793H starts up and stays on when it is ready.
- The **DSL1** and **DSL2** LEDs blink while the P-793H is trying to establish a connection with the ISP and stay on when the connection is established.
- Each **LAN** LED stays on if the corresponding **ETHERNET** port is properly connected and blinks when there is traffic.

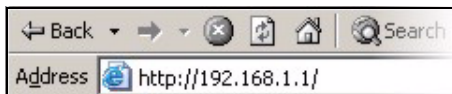


If any of these LEDs are off, check your connections, and inspect your cables for damage. If the LEDs are still off, contact your local vendor.

2 Status Page

Use the Status screen to view basic setup information.

- 1 Open your Internet browser, and enter <http://192.168.1.1>.

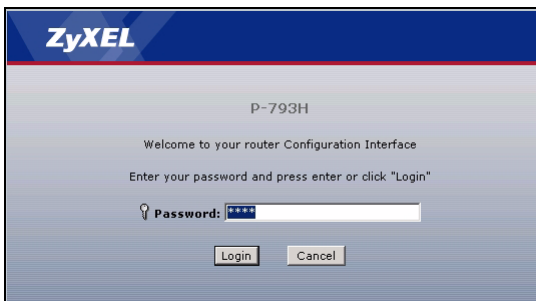


If you cannot access the web configurator, make sure you allow pop-up windows and JavaScripts and set up Java permissions appropriately. See the User's Guide for more information and further troubleshooting tips.



Make sure your computer's IP address is in the same subnet as the P-793H's LAN IP address.

- 2 Enter the password **user** to go directly to the **Status** screen.



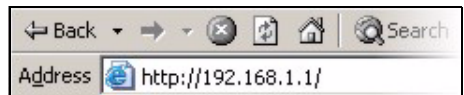
- 3 See the User's Guide for field descriptions of the **Status** screen.



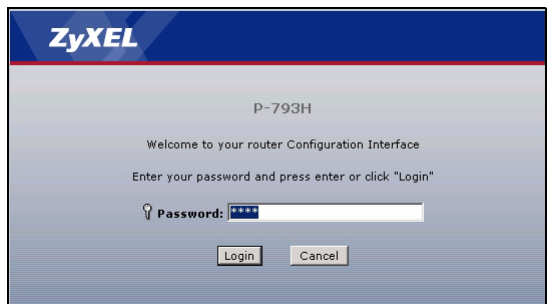
3 Internet Setup

You must have an account for Internet access, and you should have the information provided by your Internet Service Provider (ISP).

- 1 Open your Internet browser, and enter <http://192.168.1.1>.



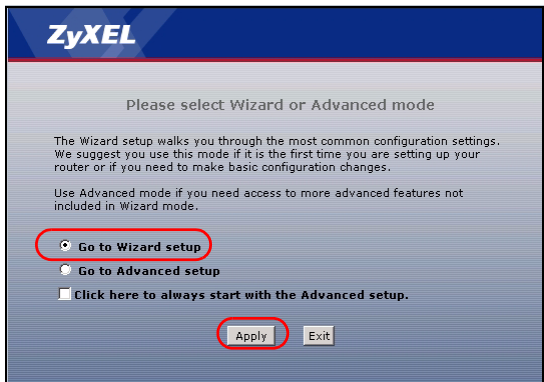
- 2 Enter the administrator password **1234**, and click **Login**.



3 It is recommended to change the default password. Follow the directions in this screen to do so.

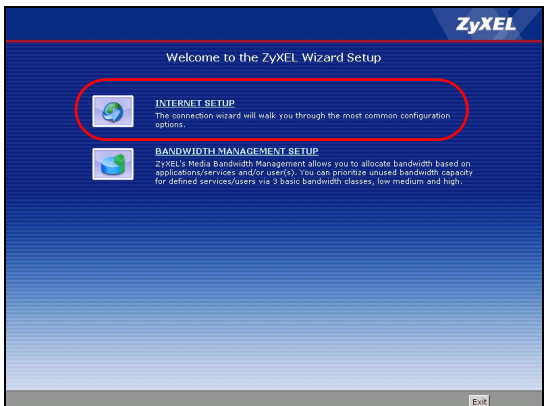


4 Click **Go to Wizard setup**, and then click **Apply**.



5 Click **Internet Setup**.

6 Follow the directions in this wizard to set up your Internet connection.



If you cannot access the Internet when your computer is connected to the **Ethernet** port:



Check the LEDs on the front panel. If they are different from what is described in section 1, make sure the connections are correct. (See section 1.) If the LEDs are still different, turn off the device, wait a few seconds, and turn it on again.



Follow the steps in section 3. Make sure you enter the correct information. For example, if your account has a user name and password, make sure you type it correctly. If you are not sure which encapsulation your ISP uses, contact your ISP.



If you are using a new Internet account, contact your ISP to make sure it is active.

Procedure to View a Product's Certification(s)

- 1 Go to www.zyxel.com.
- 2 Select your product from the drop-down list box on the ZyXEL home page to go to that product's page.
- 3 Select the certification you wish to view from this page.