

ZyXEL

TOTAL INTERNET ACCESS SOLUTION

omni.net Plus/D

ISDN Terminal Adapter

Quick Start Guide

GUI Configuration Manager • 3Way Conference • Call Waiting
Call Forwarding • Call Hold/Retrieve • Multiple Subscriber Number
Advice of Charge • Caller ID Support • Quick Dial • Intercom

Table of Contents

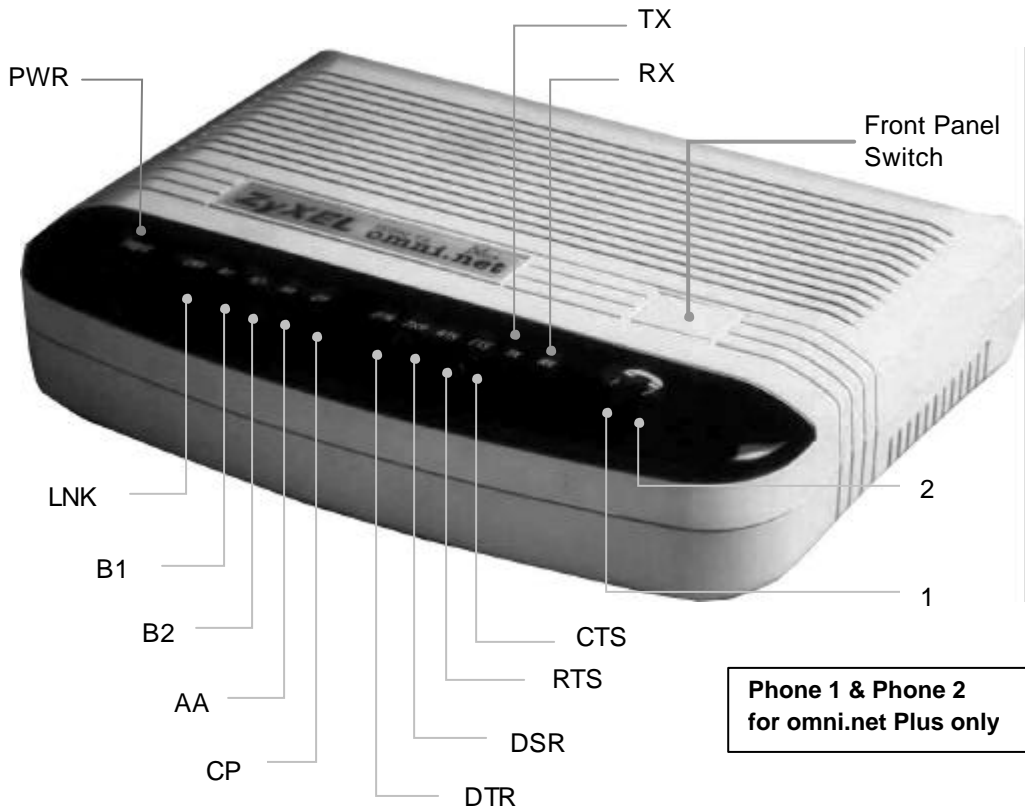
1. Installation	1-1
Front Panel Description	1-1
Back Panel Description and Connections (S/T Interface)	1-4
Connect Your omni.net Plus/D (U interface) to ISDN Line	1-5
Power On and Self Diagnostics	1-6
2. Install Windows 95/98/NT Driver (INF file)	2-1
Before Installation	2-1
Start Installing INF file	2-2
3. Install ZyXEL ISDN Configuration Manager for Windows 95/98/NT	3-1
4. Setup ZyXEL ISDN Configuration Manager for Windows 3.x	4-1
Customer Support	4-2

1. Installation

Thank you for choosing ZyXEL ISDN Terminal Adapter (ISDN TA) as your device for connecting ISDN. This section is designed to guide you through a quick and correct installation of your new omni.net Plus or omni.net D.

The following graphics are only displayed for the omni.net Plus. However, since the front panel and back panel of omni.net Plus and omni.net D are almost identical, all installation steps below can be applied to both of the omni.net Plus and the omni.net D unless specifically noted.

Front Panel Description



Front Panel LEDs

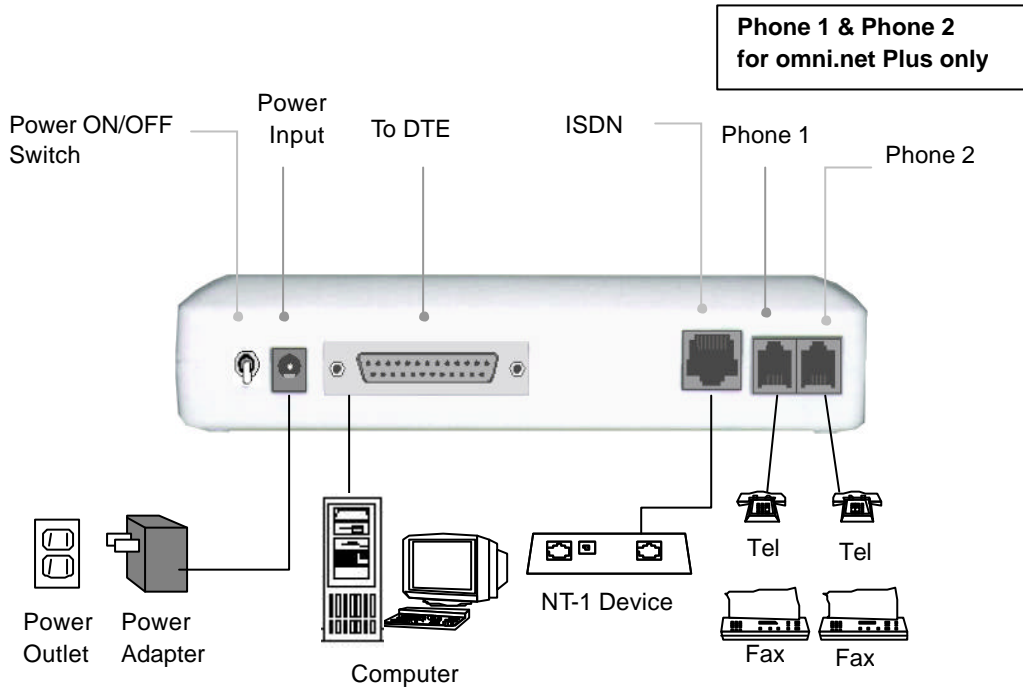
LED	Function	Active	Description
PWR	Power LED	On	When the power is turned ON.
LNK	Link LED	On Blinking	When the link with the local ISDN switch is active. When attempting to make a connection.
B1	B1 Channel	On	When the B1 channel is established.
B2	B2 Channel	On	When the B2 channel is established.
AA	Auto-Answer	On Blinking	When your ISDN TA is in Auto Answer mode. When your TA rings.
CP	Compression	On	When Data Compression is being used over one or more of the B Channels. Compression types are Hi/fn LZS (formerly Stac) for PPP connections, and V.42bis for V.120 or X.75 connections.
DTR	Data Terminal Ready	On	When the DTE or computer connected to the DTE port signals that it is ready for communication by establishing the RS-232 link.
DSR	Data Set Ready	On	When the modem is ready for communication with the DTE.
RTS	Request To Send	On	When the DTE has data to be sent to the remote modem. The RTS signal is used in Hardware Handshaking.
CTS	Clear To Send	On	When the modem is ready to receive data from the remote modem. The CTS signal is used in Hardware Handshaking.
TX	Transmit Data	Blinking	When the DTE/Computer transmits data to the DTE port.
RX	Receive Data	On	When the DTE/Computer receives data from the DTE port.
Phone 1	(for omni.net Plus only)	On	When the POTS port 1 telephone/handset is off-hook.
Phone 2	(for omni.net Plus only)	On	When the POTS port 2 telephone/handset is off-hook.

Front Panel Switch

When the TA is in command state, pressing the front panel button causes it to dial the default phone number pre-stored in the NVRAM. The default number pointer to the telephone directory is assigned by the AT*D*n* command.

When the TA is on-line, pressing the button will tear down the connection and bring it into command state.

Back Panel Description and Connections (S/T Interface)

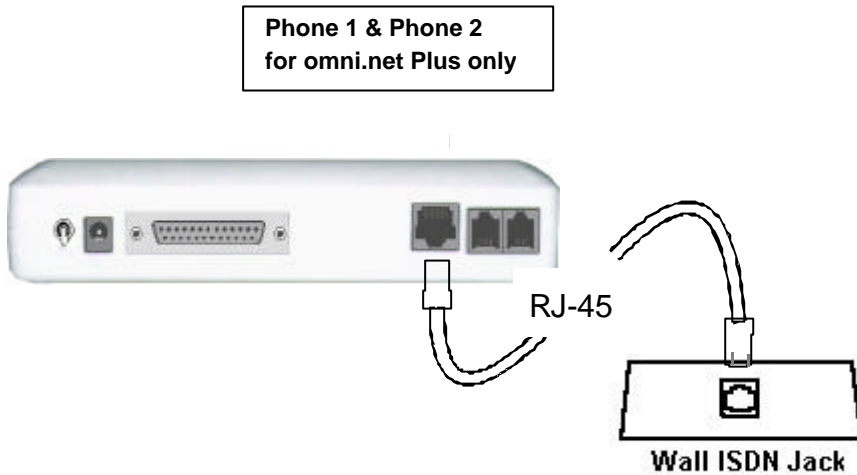


Back Panel Switch and Connectors

ON/OFF	Power ON/OFF switch
POWER	Input terminal for power adapter.
To DTE	Serial port DB-25 female connector for connection to the serial port of a DTE (computer/terminal).
ISDN	ISDN RJ-45 terminal jack; connects to a S/T interface or a U interface..
PHONE 1	RJ-11 terminal jack for analog adapter 1; for connecting to analog equipment. (phone, fax, answering machine, etc.)
PHONE 2	RJ-11 terminal jack for analog adapter 2; for connecting to analog equipment. (phone, fax, answering machine, etc.)

Connect Your omni.net Plus/D (U interface) to ISDN Line

Connect one end of the RJ-45 connectors to the “ISDN U” jack, and another end to your wall jack, as the following illustration:



Power On and Self Diagnostics

Once you have completed all of the installation steps above, flip the omni On/Off switch to the ON (up) position. The unit starts a self-test sequence, where you should see a series of LED lights blinking (LED, B1, B2, AA). After this cycle is complete, the PWR light should stay on.

If the test routine fails, the LNK LED flashes. Refer to your *omni.net Plus/D Technical Reference* for more information on self-tests and error codes.

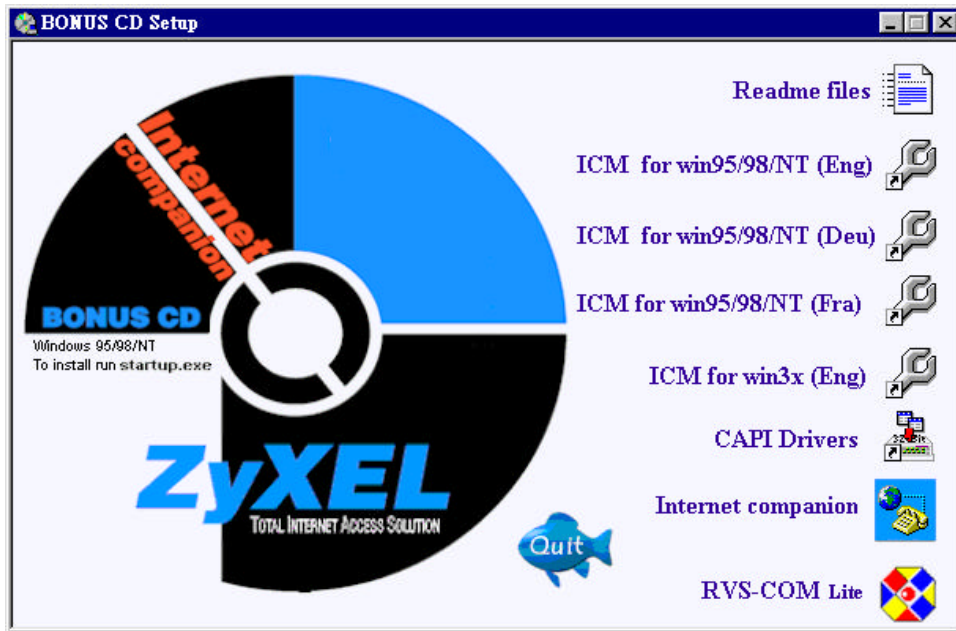
If you have a communication program loaded and active (connected to the same serial port as the omni), you should see the **DTR** LED should be ON after the self-test.

2. Install Windows 95/98/NT Driver (INF file)

As a windows 95/98/NT user, for successfully using ZyXEL ISDN TA, you have to install INF files to setup your TA first, then install your ZyXEL ISDN Configuration Manager.

Before Installation

Insert BONUS CD into your CD-ROM drive, it will come out a Setup display as below. Click on **Readme files**, it will show a complete installation and setup guide for you.



Note: The RVS-COM Lite(software) provided varies from country to country. For further information, please contact your local distributor.

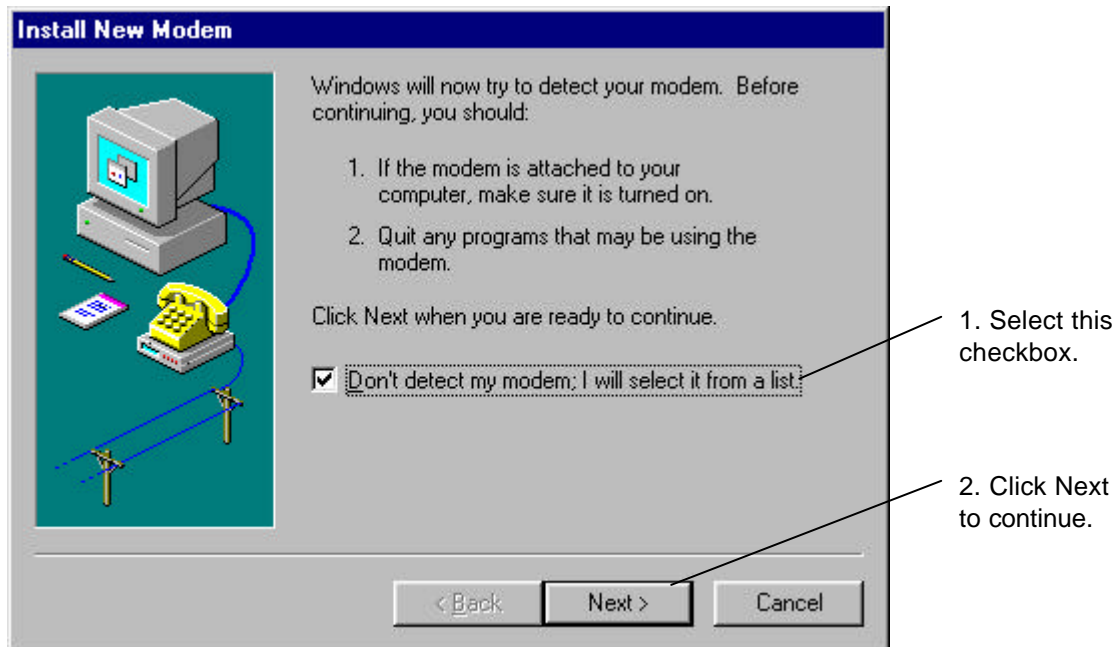
Start Installing INF file

If your computer supports Plug & Play, be sure your TA is powered on before starting your computer. If you are using a non-PnP protocol, follow the steps below to perform the installation:

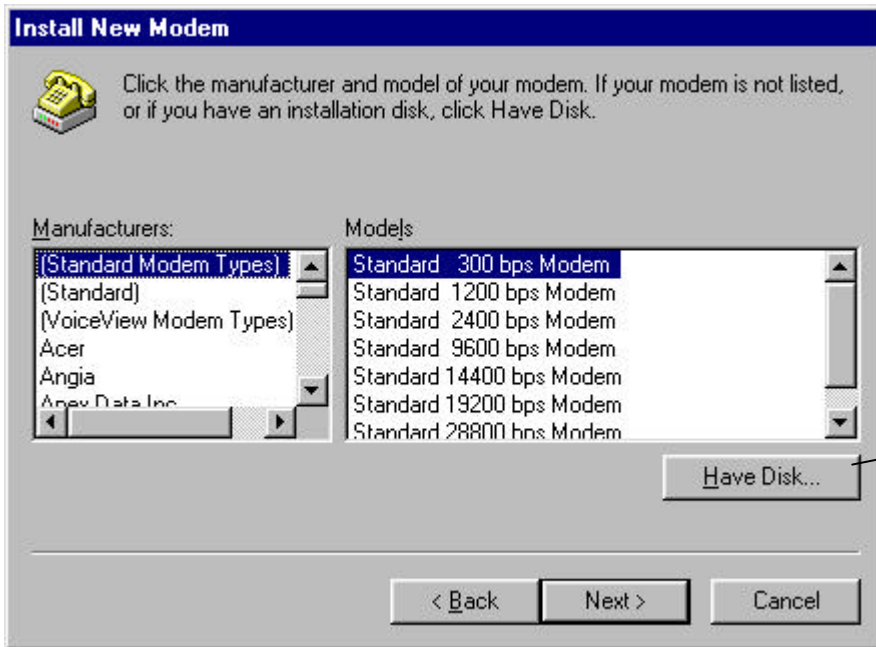
Step 1. Double-click on the Modems icon in the Windows 95/98/NT Control Panel folder. Then click the Add button.



Step 2. Select "Don't detect my modem; I will select form a list." Then, click Next to continue.



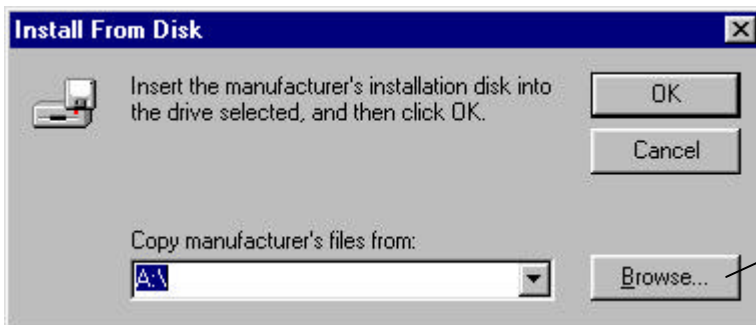
Step 3. Click Have Disk, then follow the instructions on the following illustrations:



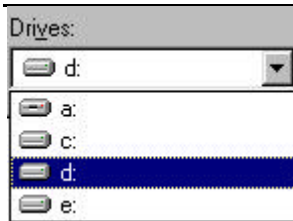
Click here to continue.



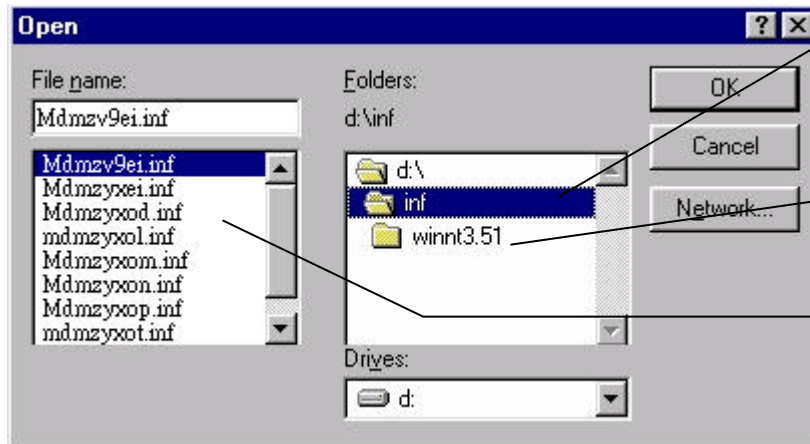
2. Make sure this BONUS CD is in your CD-ROM device.



3. Use Browse to find the location of the updated INF file.



4. Select your CD-ROM drive (here is D:), then you will see the next display.



5. Select INF folder, it will come out a list of INF files in the left column.

(For Windows NT3.51 user, please select winnt3.51 folder.)

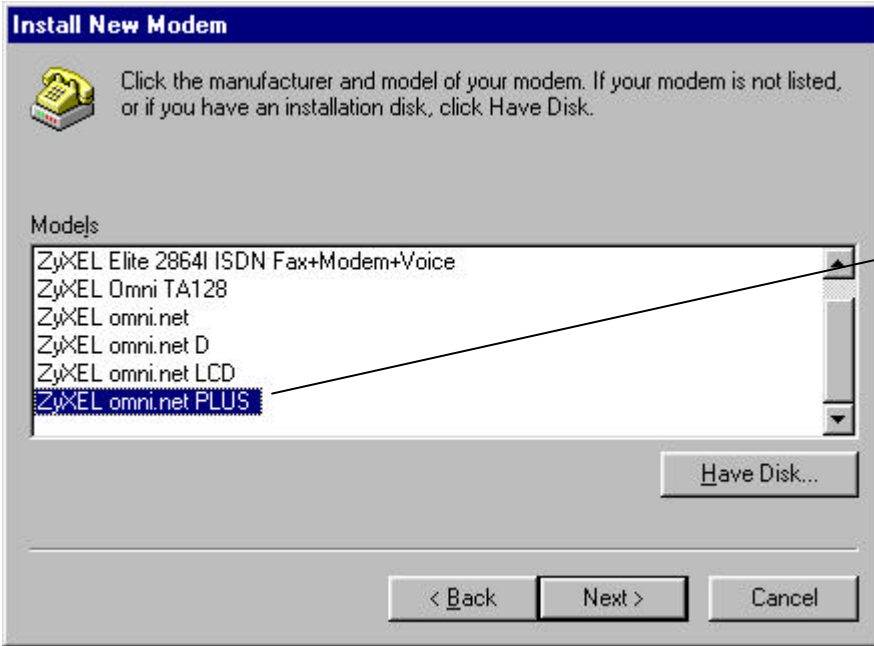
6. **Don't make any selection here.** Click OK to go to the next screen.

Step 4. Click OK to install INF files from your BONUS CD.



Click OK to continue.

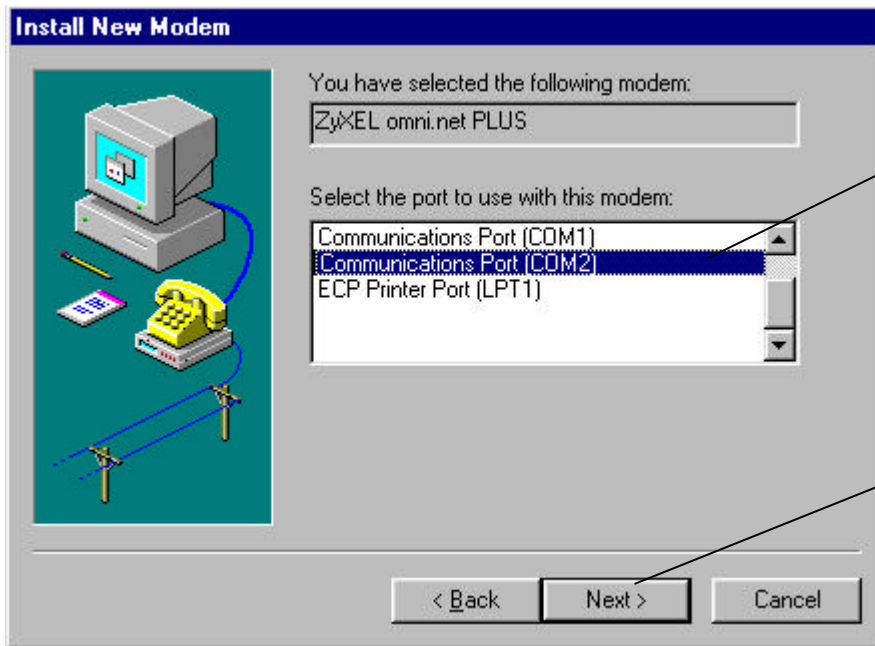
Step 5. Use the scroll bar to locate the model name of your ZyXEL ISDN TA, then click once on the new device 'ZyXEL omni.net PLUS' or "ZyXEL omni.net D."



Click here for
you new
omni.net Plus.

For omni.net D,
you have to
select 'ZyXEL
omni.net D.'

Step 6. Select the COM port your omni.net PLUS/D is connected.



1. Click the right COM port (COM 1, 2, 3 or 4)

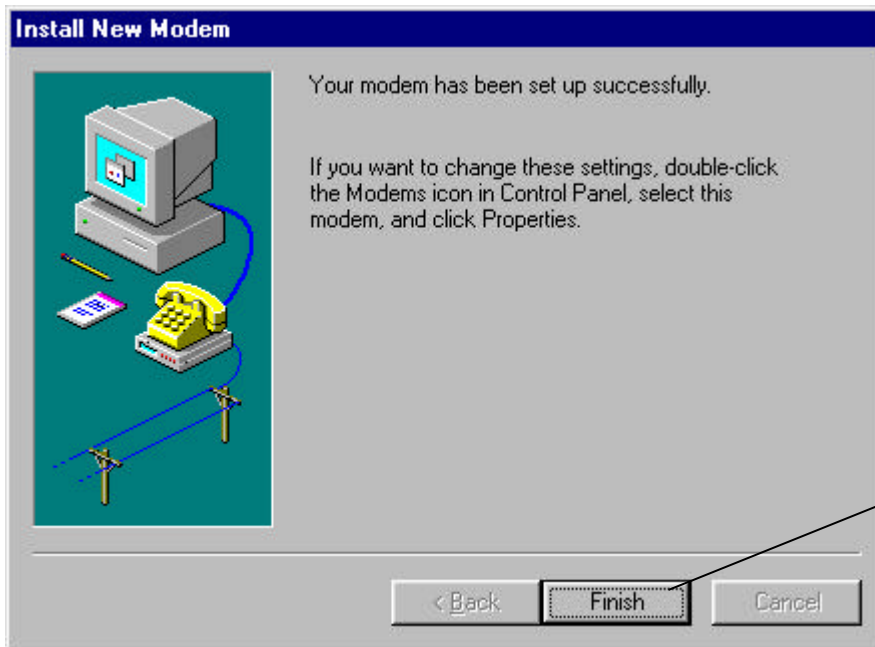
2. Click Next to continue

Step 7. Please wait...




Please wait...

Step 8. Click Finish to complete INF files installation.



Click here to Finish.



Note: You also can download an updated INF file from ZyXEL's FTP, Web Site, or BBS. For more information on INF files included in BONUS CD, please refer to the readme files on BONUS CD.

Step 9. Click Close to end the INF files installation.



The ZyXEL omni.net Plus has successfully installed in your PC.

Click Close to end the INF files installation.

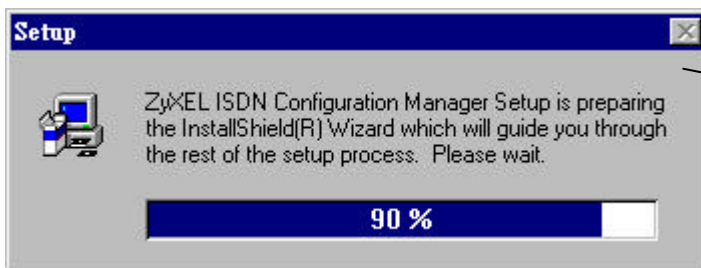
3. Install ZyXEL ISDN Configuration Manager for Windows 95/98/NT

Once the INF file is successfully installed, you can start installing ISDN Configuration Manager & CAPI (32-bit) into your PC. Follow the steps below to proceed your installation:

- Step 1.** Make sure the BONUS CD is in your CD-ROM drive, and the Setup display is active. (If not, double-click the startup.exe to active the Setup display.)
- Step 2.** For English Windows 95/98/NT, click on "Install ISDN Configuration Manager & CAPI (32-bit) for win95/98/NT(English)" on your BONUS CD.

For Deutsch Windows 95/98/NT, please choose "Install ISDN Configuration Manager & CAPI for win95/98/NT(Deutsch)."

As setup starting, you can see the following display:



Please wait for the next setup screen.



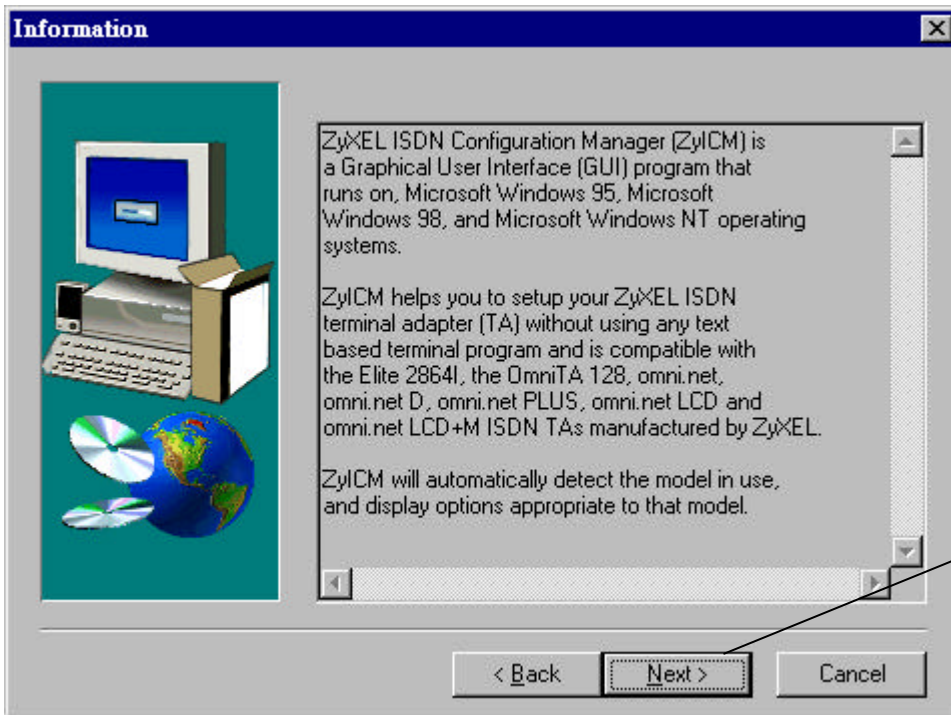
2. Please wait for the next screen.

Step 3. Welcome information:



Click Next to continue.

Step 4. Information about ZyXEL ISDN Configuration Manager:



Click Next to continue.

Step 5. Select install item:

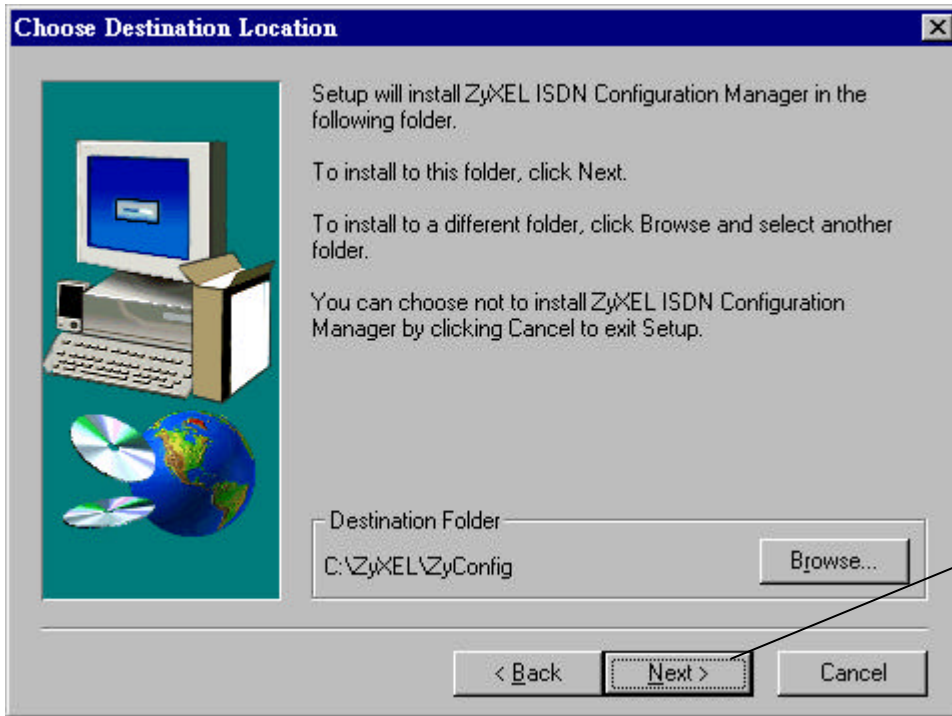
The screenshot shows a dialog box titled "Select install item" with a close button (X) in the top right corner. On the left side, there is a graphic showing a computer monitor, keyboard, mouse, and a CD-ROM next to a globe. The main text reads: "In the Options list, Please select your location." Below this, there are two radio button options: "North America" and "Others". The "Others" option is selected and has a dashed rectangular box around it. Below the options, it says: "If you select North America, SPID wizard will be installed." At the bottom of the dialog box are three buttons: "< Back", "Next >", and "Cancel".

a. North American users click here, then follow the instructions on your screen.

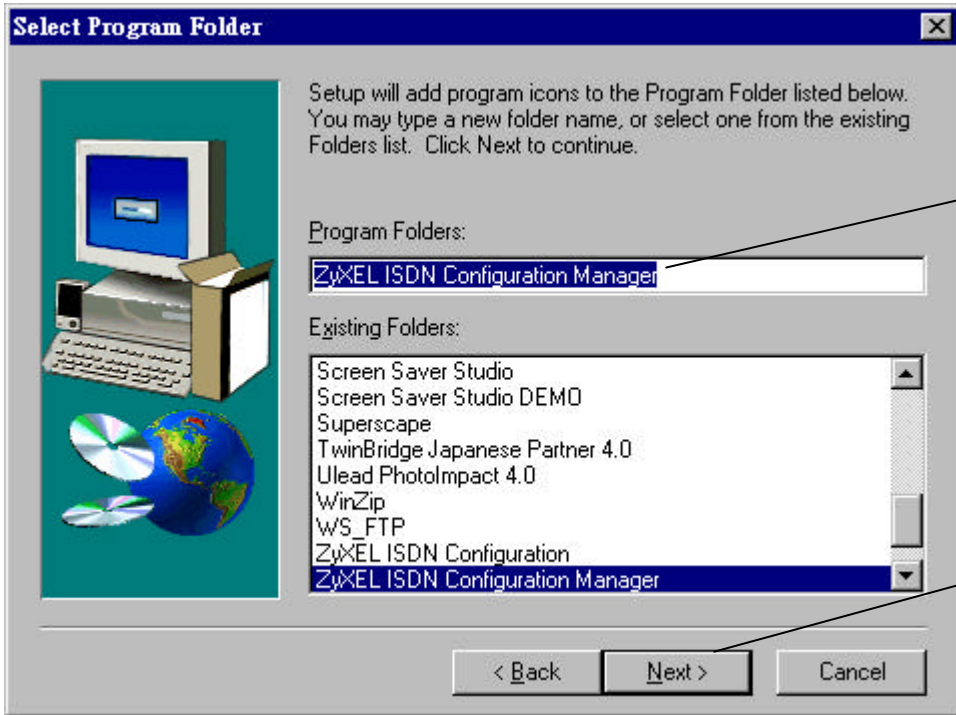
b. European users click here.

c. Click Next to continue.

Step 6. Choose Destination Location :



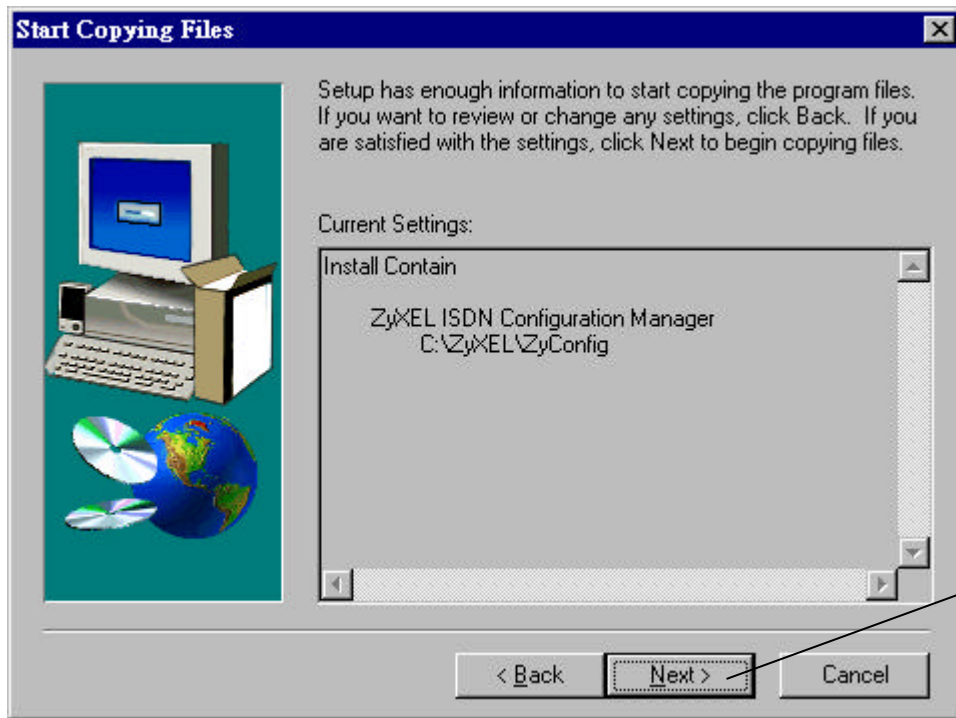
Step 7. Select Program folder where the ZyXEL ISDN Configuration Manager will be installed.:



This is a default folder name. You may type a new one or select one from the existing folders.

Click Next to continue.

Step 8. Start copying files to the following directory:



Click Next to continue.

Step 9. Click OK to finish the installation of ZyXEL ISDN Configuration Manager.



Once the installation is completed, it will create the program group of ZyXEL ISDN Configuration Manager on your start menu. Now, you can start to use the ZyXEL ISDN Configuration Manager.

4. Setup ZyXEL ISDN Configuration Manager for Windows 3.x

Step 1. Make sure the BONUS CD is in your CD-ROM device.

Step 2. Use File Manager to view the file list of D: (replace D: with the drive letter of your CD-ROM drive)

Step 3. You will find the directory of ICM_win3x under D:\. Click on setup.exe to start running setup program.

Step 4. Follow the setup wizard to go through the installation.

Once the installation is completed, it will create the program group of ZyXEL ISDN Configuration Manager on your start menu. Now, you can start to use the ZyXEL ISDN Configuration Manager.

For more information on using your ZyXEL ISDN Configuration Manager, 16-bit CAPI driver, and configuring ISDN parameters; please refer to "ISDN Configuration Manager & CAPI (16-bit) for win 95/98/NT (English)" on readme files of your BONUS CD.

Customer Support ZyXEL ISDN Terminal Adapter

If you have any questions about your ZyXEL product or desire customer assistance, contact ZyXEL in one of the following ways.

Contact ZyXEL

E-mail	Technical Support	Support@zyxel.com in North America Support@zyxel.com.tw outside of the US.
E-mail	Sales	Sales@zyxel.com in North America Sales@zyxel.com.tw outside of the US.
Web Site	Product Information	www.zyxel.com ZyXEL's Internet site.
Phone	North America Outside North America	(714)- 632-0882 (8:00 to 5:00 PM PST) +886-3-5782439 Ext.:266 (8:00 to 5:00 PM local)
Fax	North America Oustide North America	(714) 632-0858 +886-3-5782439
FTP File Downloads	North America Europe	ftp.zyxel.com (Software and ROM upgrades) ftp.zyxel.co.at (Software and ROM upgrades)

Postal Service

ZyXEL Communications Corporation

6, Innovation Road II
Science-Based Industrial Park
Hsinchu, Taiwan 300, R.O.C.
Tel: 886-3-578-3942; Fax: 886-3-578-2439
E-mail: sales@zyxel.com.tw
support@zyxel.com.tw

ZyXEL Communications, Inc.

1650 Miraloma Ave,
Placentia, CA 92870
U.S.A.
Tel: 1-714-632-0882
Fax: 1-714-632-0858
<http://www.zyxel.com>

ZyXEL

TOTAL INTERNET ACCESS SOLUTION